

# Clustering Based Routing Protocols for Wireless Sensor Networks

Meera Jadhav<sup>1</sup>, N.Priyanka Kumari<sup>2</sup>, Sujata Ramesh<sup>3</sup>, Shilpa R Patil<sup>4</sup>

<sup>1,3,4</sup> *Department of Computer Science and Engineering, VTU-Belgaum.  
Sambhram Institute of Technology, Bangalore-97, India.*

<sup>1</sup>[meeraj33@gmail.com](mailto:meeraj33@gmail.com)

<sup>3</sup>[pudale@hotmail.com](mailto:pudale@hotmail.com)

<sup>4</sup>[shilpasrp@gmail.com](mailto:shilpasrp@gmail.com)

<sup>2</sup> *Department of Computer Science and Engineering, JNT University  
TKR Colleges of Engineering & Technology, Hyderabad, India.*

<sup>2</sup>[ppriyankapriya@gmail.com](mailto:ppriyankapriya@gmail.com)

**Abstract**—Sensor networks have become an emerging new tool for habitat monitoring in nature preserves, it monitors and gathering events in hazardous environments, it does the work of buildings surveillance, monitoring the enemy activities in a battlefield environment. Sensor nodes have limited energy resources, less storage capacity and they are energy constrain. Efficient routing protocols are very critical to design in order to prolong the lifetime of the sensor nodes. Sensor networks are mainly designed for monitoring and reporting events though sensor nodes are application dependent, designing a single routing protocol cannot be efficient for sensor networks for all applications. In this paper, we first analyze the requirements, similarities and distinguish between sensors networks and MANETs (Mobile Ad hoc Networks). We look at the existing routing protocols for sensor networks and present a critical analysis of these protocols. The cluster based protocols are energy efficient & prolong the network lifetime when compared to other protocols.

**Keywords:** *Wireless Sensor Networks, Challenges, Cluster, Energy Efficient, Routing Protocols.*

## I. INTRODUCTION

As a result of advances in sensor technology and wireless communication, sensor networks have emerged as an indispensable and important new tool for tracking contamination in hazardous environments, habitat monitoring

in the nature preserves, enemy tracking in battlefield environments, traffic monitoring, surveillance of buildings, etc. When compare to the existing network models MANETs (Mobile Ad hoc Networks) have found to be the closest to sensor networks that share many characteristics. For example, the nodes in sensor network are randomly distributed and the network topology is not fixed; there is no electricity supply & battery driven power is a limiting resource. Nodes in the network are connected to each other in wireless fashion via communication links.

MANETs are infra-structure less wireless communication networks where the nodes which are present in MANETs act as both hosts as well as routers. MANETs are collection of wireless mobile hosts which form a temporary network without the aid of any established infrastructure.

Features of MANETs are:

- MANETs have dynamic topology. The network topology in MANETs can change any time because of node mobility and nodes may become disconnected very frequently.
- There is no centralized administrator.

- MANETs nodes have short transmission range. The routes between nodes have one or more hops.
- MANETs nodes act as routers or they depend on others for routing.
- In MANETs the movement of nodes invalidates topology information.

The protocols and techniques which are developed for MANETs cannot be applied to sensor networks because the two networks vary many factors some of them are given below [1].

- Sensor networks are mainly focus on information gathering likewise the MANETs are designed for distributed the information.
- The deployment of sensors is done by one owner, while MANET could be deployed by several unrelated units.
- The magnitude of sensor nodes in sensor networks is higher than that of MANETs [1].
- Each Sensor network nodes will have unique id unlike MANETs nodes which do not have a unique ID [1].
- The nodes in sensor are much cheaper than nodes in a MANETs.
- Sensor nodes are battery operated with cannot be recharged however, nodes in a MANET is recharged somehow.
- The flow of data in sensor networks is either from sink to the nodes or from nodes to the sink while in MANET, the flow of data is irregular.
- The nodes in sensors are deployed once in lifetime, while The nodes in MANET move in an ad hoc manner.
- Sensor nodes have many limitation such as they are energy constrain, limited power supply, limited communication capability than MANETs.

Many researchers have shown interest in sensor networks and they have focused on critical issues to invent new protocol which are energy efficient, low cost, which are power aware, secure, fault tolerant. In this paper, we analyze the issues that

are involved in designing efficient routing protocols and compare and contrast the existing routing protocols.

## II. SENSOR NETWORK ARCHITECTURE AND REQUIREMENTS

First we look how at sensor network architecture and its requirements than we discuss on routing protocols. The deployment of sensor nodes is in the range of hundreds to thousands which are randomly distributed in wide area. The nodes in the network try to communicate with each other directly or with the help of other neighbour nodes. One of the nodes among them will act as a sink. The sink is capable of communicating with the user either directly or through some existing wired networks connection [2].

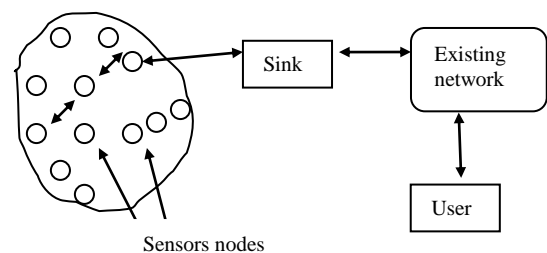


Fig 1. Sensor node architecture

Figure 1 shows the architecture of a sensor network in which sensor nodes are placed randomly which are shown as small circles. The arrow indicated the direction in which data transfers. Each node when it senses the information will aggregate the data and transfer to the neighbour nodes. The neighbour nodes will ultimately help to transfer the data to the sink. If the node is near to the sink then it will transfer the data directly to it. If the node is far from sink then it takes help of other neighbour nodes to transfer the data to the sink. The transfer can be single hop or multi hop depending on how far the node is located from the sink. Once the information is transferred to the sink the user no matter in may be present in any part of the world can access the information sensed by the

sensor via existing network connection which can be either wired or wireless connection.

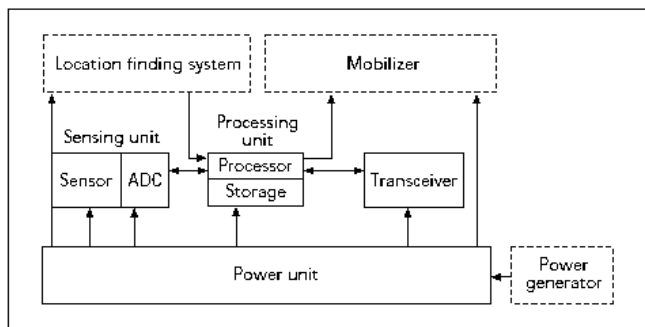


Fig 2. Sensor node components

Each sensor node mainly consists of the five major components which are shown in Figure 2: sensor unit, analog to digital convector (ADC), central processing unit (CPU), power unit, and communication unit. The sensor unit has two parts one is sensor to sense the data & the other is ADC which is responsible for converting sensed information to digital form. ADC is a translator that informs the CPU what the sensor unit has sensed & informs the sensor unit what to do. Communication unit function is to receive command or the query & transmit the data from CPU to the outside world. CPU is the most important & complex unit. The next unit is the processing unit, the sensed data is processed & the processed data need to be stored in the storage unit. The transceiver unit is the one which connect the node to the network. The power unit will supply power to the node. The power can be supplied by using solar cells. These are the five main components. In some application where we want to find the location of the node in the network than the location finding system is used. In some application where the nodes need to be moved from one place to another than mobilizer is used.

### III. WIRELESS SENSOR NETWORKS ROUTING PROTOCOLS

The classification of the routing protocols based on path establishment, network structure, protocol operation, communication initiator. Based on these factors different protocols have been classified.

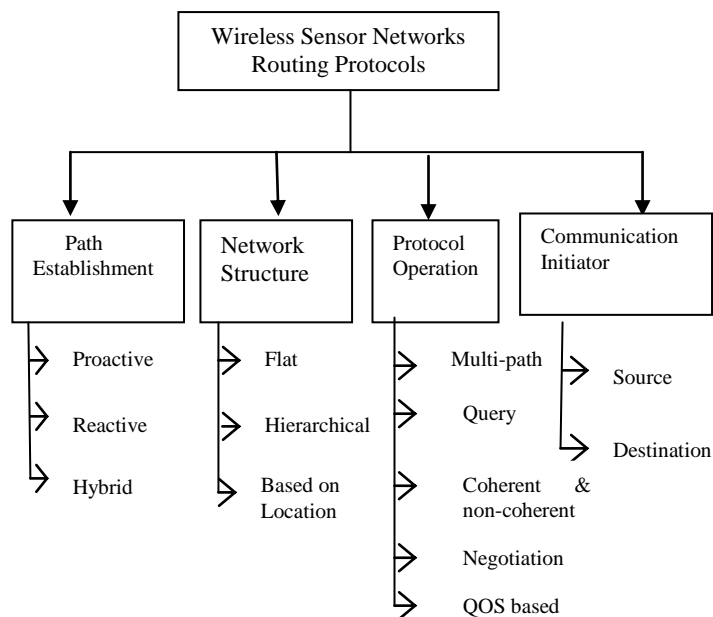


Fig 3. Wireless Sensor Network routing protocols.

A. Routing Protocols are classified as three type's namely Proactive, Reactive & Hybrid protocol.

The classification is based on how the sender of a message discovers a route to the receiver based on these routing protocols can be classified into three categories, namely, proactive, reactive & hybrid protocols.

**Proactive protocols:** In proactive protocols, all routes are computed before they are really needed. It maintains routes between every host pair at all times. Routes are calculated and maintained before hand. It maintains the routes which may never be used. It is based on periodic updates. It has high routing overhead

•Example: DSDV (destination sequenced distance vector)

**Reactive protocols:** It determines the route if and when needed. Routes are calculated on-demand. Source will

initiate the route discovery. Lower overhead since routes are determined on demand i.e., when it want to send data. It has significant delay in route determination. It employs flooding (global search). Control traffic may be bursty. It has a better trade-off depends on the traffic and mobility patterns

•Example: DSR (dynamic source routing).

**Hybrid protocols:** It is adaptive in nature. It uses a combination of these two ideas of proactive and reactive. Since sensor nodes are limited in energy, storage, power and the number of nodes in the network could be very large, sensor nodes cannot afford the storage space for large routing tables. Therefore reactive and hybrid routing protocols are attractive in sensor networks.

•Example: ZRP (zone routing protocol)

*B. Routing protocols can be classified into three categories, based on the nodes participating style namely, direct, flat. Clustering protocols*

**Direct Protocol:** In direct communication protocols, sensor node sends the data directly to the sink. In this protocol, the larger the diameter of the sensor nodes, the sooner the power of sensor nodes will be drained off very quickly. Collision will effect when the number of sensor nodes increases that ultimately decreases the data transmission.

**Flat protocols:** All the nodes in the network are treated equally. When a node wishes to send data, it will send the data using several hops to the sink. The probability of the nodes participation in the data transmission process is higher for those nodes that are around the sink than those nodes which are far away from the sink. So, the nodes which are around the sink will drain off their power soon. When compared to the nodes far from the sink.

**Cluster Protocol:** This protocol is scalable. It is energy efficient in finding the route to a destination where the routes can be managed easily. In clustering protocol, the sensor nodes are randomly distributed in the sensor network. A node called as cluster-head is elected as the leader which co-ordinates & controls all the activities in the sensor network. This node is responsible to transfer the data from the sensor nodes to the base station. Here the network is divided into a number of clusters based on geographical location, or the energy present in the node, or the type of data which they want to send etc. In each cluster a cluster-head is elected based on the clustering algorithm. The cluster-head will control all the activities in the cluster. The nodes in the cluster sense the information & transfer the data to the elected cluster-head. The cluster-head will aggregate all the data & transfer the data to the base station directly if it is nearer to the base station or it transfers via other cluster-heads. By this process the number of nodes participating in the data transfer is decreased. Hence we prolong the network life time.

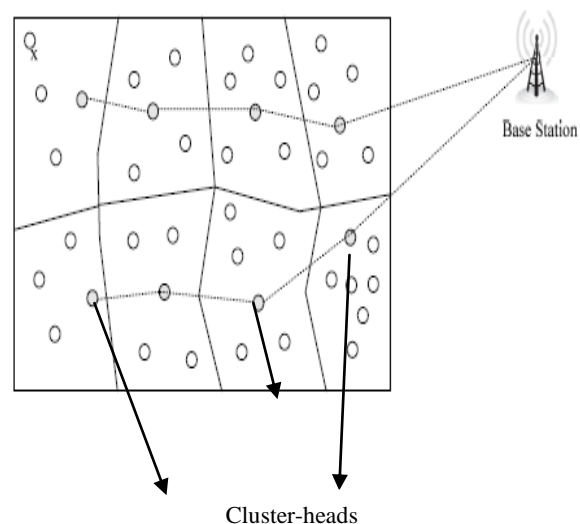


Fig 4. Cluster-heads distribution in sensor network

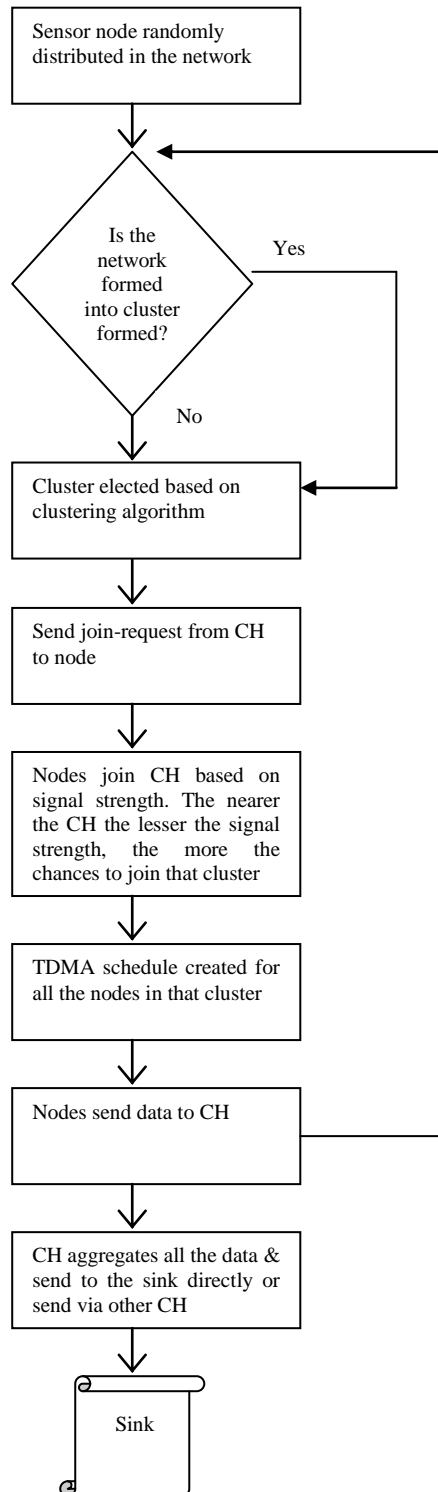


Fig 5. Cluster Formation & flow of sending the data

#### IV. EXISTING ROUTING PROTOCOLS:

##### 1) *Low Energy Adaptive Clustering Hierarchy (LEACH)* [3]:

It is a clustering-based protocol with randomized rotation of the cluster-heads to evenly distribute the energy load among the nodes in the network evenly. It is a hierarchical protocol in which most nodes transmit the data to cluster heads. The operation of LEACH mainly consists of two phases: Setup phase & Steady phase.

**The Setup Phase:** In the setup phase, the clusters will be organized and the cluster heads will be elected based on the threshold [13]. In every round, a cluster-head will be elected based on the algorithm. If a node becomes a cluster head in the present round then it cannot become a cluster head again for  $P$  rounds, where  $P$  is the number of cluster-head (desired percentage of cluster heads).

**The Steady State Phase:** In the steady state phase, once the cluster is elected & cluster is formed the nodes will send the information to the cluster-head. Cluster-head will send the data to the base station. The duration of the steady state phase is much longer than the duration of the setup phase in order to reduce the overhead. LEACH is one of the protocols which ends to reduce the energy consumption in a WSN. However, LEACH uses single-hop routing in which each sensor node transmits information either directly to the cluster-head or directly to the sink. Due to this drawback, it is not suitable for networks that are deployed in large regions.

##### 2) *Power-Efficient Gathering in Sensor Information Systems (PEGASIS)* [4]:

It is a chain based & an energy efficient protocol, which provides improvements over LEACH protocol. In PEGASIS, in order to send the data each node communicates with nearby neighbor nodes. Once the data is collected the node which is nearer to the sink is elected as leader. The other nodes will send the data to the leader node which in turn sends the sensed data to the sink. It takes turns based on the elected leader in order to transmit the

information to the base station in this way it reducing the amount of energy spent per round. The nodes are organized in the form a chain which helps to transmit the data to the sink easily. Since each node has global knowledge of the network, the chain can be constructed easily by using some greedy algorithm.

**3) Threshold sensitive Energy Efficient Sensor Network protocol (TEEN) [5]:** It is a cluster-based routing protocol based on LEACH protocol. Based on the location, the nodes which are closer form the clusters. The cluster node is responsible to transmit the data to the base station. Once the clusters are formed cluster-heads broadcast two threshold values namely hard threshold & soft threshold. Hard threshold is nothing but the minimum possible value of an attribute to trigger a sensor node. If the event occurs in the range of interest the node will transmit an event. Therefore there is a significant reduction in the transmission delay happens. Until & unless there is a change in the soft threshold the nodes does not send a new data packets. When soft threshold is employing it prevents from the redundant data transmission. The protocol responds to the sudden changes in the sensed attribute, it is mainly applicable for time-critical applications.

**4) AdaPtive Threshold sensitive Energy Efficient sensor Network Protocol (APTEEN) [6]:** The protocol is an extension of TEEN which focuses on both time-critical events and periodic data collections. It has same network architecture like TEEN. After the formation of the cluster's the cluster heads broadcast to the attributes, threshold values, and transmission schedule to all nodes in the cluster. By using the cluster-head concept the data is aggregated & thus energy is saved. Based to the energy dissipation and network lifetime, TEEN has better performance than LEACH and APTEEN because there is a decreased in the number of transmissions. Drawback of TEEN and APTEEN is the overhead and complexity for cluster formation at multi-levels. By the

implementation of threshold-based functions and dealing with the attributes based on queries.

**5) Stable Election Protocol (SEP) [7]:** SEP is an extension of LEACH protocol. It is a heterogeneous network (nodes with different energy level initially) the cluster head is elected based on the weighted election probabilities with respect to the energy level in the nodes. Cluster head is elected randomly based on energy level with maintains the load balance. In this protocol, two types of nodes which include (two tier in-clustering) and two level hierarchies is considered.

**6) Hybrid Energy Efficient Distributed) protocol (HEED) [8]:** is the clustering protocol. The main feature in HEED is the residual energy than the network topology which consists of nodes degree, nodes distance to the neighbors. These are the two main criteria on which cluster-head is elected to maintain load balance. All the nodes have same initial energy which is called as homogeneous nodes.

**7) Energy Efficient Clustering Scheme (EECS) [9]:** It is a clustering protocol in which data is aggregation periodically mainly applications for wireless sensor networks. Cluster head is selected based on more residual energy with local radio communication. In the cluster head election process a constant number of nodes which want to become a cluster head is elected based on their residual energy. This election of the cluster head process is localized without any iteration. By this way the cluster head is elected in a uniform & evenly distributed way. In the cluster formation phase, a novel method is introduced to balance the load among the elected cluster heads. The nodes need to have a global knowledge about the distances between the elected cluster-heads and the base station.

**8) Distributed Energy Efficient Clustering Protocol (DEEC) [10]:** It is a cluster based scheme for multi level and two level energy heterogeneous nodes where initial energy of the nodes

is different. In this approach, the cluster heads are elected based on the probability between residual energy of in each node and the average energy of the network. The choice of being cluster-heads is different for each of the nodes according to their initial and residual energy. The nodes with high initial and residual energy have more chances of being elected as cluster heads when compared to nodes with low energy levels. For each round, a new cluster-heads will be chosen; in this way the control messages are exchanged between these CHs and their nearer neighbour nodes in order to form the clusters. Loss of energy occurs due to the exchange of control messages.

**9) Static Clustering Protocol (SCP) [11]:** In this protocol, the entire network are divided into several clusters, cluster-head will communicate with the local base station, than local base station feed data to the entire network and terminal user can access useful information as an when required. Here the distance between the local base stations and the cluster node is less which ultimately reduces the energy consumption & increase the life time of the network. In view of this, static clustering protocol seems to be a more efficient communication protocol. However in the entire network life cycle, these clusters and cluster-head nodes are fixed, and the local base station are assumed to contain high-energy. In most of the cases, the local base station is an energy constrained node. The entire network may die soon because of excessive using about local base station node. In static clustering is that the nodes which are elected as cluster head remains the cluster up to the end by doing the nodes which is selected as cluster head energy drains off soon. If once the cluster head node dies that the nodes in that cluster cannot communication with the base station.

**10) Shortest Hop Routing Tree protocol (SHORT) [12]:** It is clustering protocol. It provides energy efficiency by efficiently collects useful data from a remote wireless sensor network to the base station. In this protocol the leader is

elected based on the node which has the largest residual energy. It extends the lifetime of the nodes by Self configuration and hierarchal routing. The cluster heads is elected based on the votes that it collects from the network nodes.

**11) Energy Efficient Cluster Formation Protocol (EECFP) [13]:** It is clustering protocol. The cluster head is elected based on the highest energy level. The node which has more energy is elected as cluster head for the current round. The cluster head is rotated based on node which contains more energy in the current round. It rotated the cluster head election to provide a balance of energy consumption and minimize the energy that is spent for cluster formation.

**12) Base-Station Controlled Dynamic Clustering Protocol (BCDCP) [14]:** It is a centralized routing protocol, which distributes the energy dissipation evenly among all the sensor nodes to increase the network lifetime. Based on the residual energy of all the nodes the base station will compute the average energy for all the nodes. Based on the residual energy level of all the nodes the nodes which are having higher residual energy are elected as cluster-heads by the base station. In this way it provides balanced energy consumption. The election of the node with the highest energy as a cluster head at the round may cause the other nodes to spend more energy to transfer the data to this node. The cluster-head election should be in such a way that it allows the other nodes in the cluster to spend less energy will be a better solution. All the protocols try to minimize the energy consumption using different algorithms. However, this does not assure the increase the prolongation of the overall network lifetime. Therefore, if the elected cluster-head node with the highest residual energy is located at the side of the cluster this will lead other nodes to spend more amounts of energy which usually cannot be energy efficient for the entire network. Due to this reason the cluster-head should be elected in such a way

that it minimizes the energy consumption & prolongs the network life time.

#### IV. CONCLUSION

Sensor nodes will remain resource poor when compared to MANETs. Energy efficiency is one of the main challenges in designing a routing protocol for WSNs due to the inadequate energy resources. The main objective in designing any routing protocol for WSNs is to prolong the life time of the network. In this paper, we have reviewed a study on routing protocols which were mainly based on clustering. Although many routing protocols have been proposed based on many factor but the main constrain is energy conservation. By clustering the number of nodes participating in the transfer of data is reduced. The number of transmission is also reduced. If less number of nodes is participating the energy of the non-participating node is conserved. These nodes can be used to do different tasks. Clustering algorithm is used to ultimately reduce the energy consumption & prolong the network life time. The study reveals that it is not possible to design a routing algorithm which will have better performance for all applications under all scenarios. Based on the application different routing protocols can be used.

#### REFERENCES

- [1] Akyildiz, W. Su, Y. Sankarasubramaniam, and E. Cayirci, "A survey on Sensor Networks," *IEEE Communications Magazine*, vol. 40, Issue: 8, pp. 102–114, August 2002.
- [2] F. Akyildiz, W. Su, W. Sankarasubramaniam, and E. Cayirci, "A survey on sensor networks" .2004.
- [3] Heinzelman, W.; Chandrakasan, A.; Balakrishnan, H. "Energy-Efficient Communication Protocol for Wireless Micro sensor Networks," In *Proceedings of the 33rd Hawaii International Conference on System Sciences*, Hawaii, HI, USA, 2000; pp. 1–10
- [4] S. Lindsey and C. Raghavendra, "PEGASIS: Power-Efficient Gathering in Sensor Information Systems," in *International Conf. on Communications*, 2001.
- [5] Manjeshwar and D. Arrival, "TEEN: a Routing Protocol for Enhanced Efficiency in Wireless Sensor Networks," in *International Proc. of the 15th Parallel and Distributed Processing Symposium*, 2001, pp. 2009–2015.
- [6] Manjeshwar and D. P. Agarwal, "APTEEN: A hybrid protocol for efficient routing and comprehensive information retrieval in wireless sensor networks," *Parallel and Distributed Processing Symposium, Proceedings International, IPDPS 2002*, pp. 195-202.
- [7] G. Smaragdakis, I. Matta, A. Bestavros, SEP: A Stable Election Protocol for clustered heterogeneous wireless sensor networks, in: *Second International Workshop on Sensor and Actor Network Protocols and Applications (SANPA 2004)*, 2004.
- [8] O. Younis and S. Fahmy, "HEED: A hybrid, energy-efficient, distributed Clustering approach for ad hoc sensor networks", *IEEE Transaction Mobile Computing*, vol. 3, Issue 4, pp.366–379, (2004).
- [9] Inbo Sim, KounghJin Choi, KounghJin Kwon and Jaiyong Lee, Energy Efficient Cluster header Selection Algorithm in WSN, *International Conference on Complex, Intelligent and Software Intensive Systems*, IEEE, 2009.
- [10] L. Qing, Q. Zhu, M. Wang, "Design of a distributed energy efficient clustering algorithm for heterogeneous wireless sensor networks". *ELSEVIER, Computer Communications* 29, pp 2230- 2237, 2006.
- [11] Yang, Y.; Wu, H.; Chen, H. SHORT: Shortest Hop Routing Tree for Wireless Sensor Networks. In *Proceedings of the IEEE International Conference on Communications*, Istanbul, Turkey, 2006; pp. 3450–3454.
- [12] F.bajaber and I.Awan, "Energy efficient clustering protocol to enhance lifetime of wireless sensor network", *J Ambient Intell Human Comput*, pp.239-248, 2010.
- [13] Muruganathan, S.; Ma, D.; Bhasin, R.; Fapojuwo, A. A Centralized Energy-Efficient Routing Protocol for Wireless Sensor Networks. *IEEE Radio Commun.* **2005**, 43, 8–13.